

## Sedona Lakes MUD #1, Pond 5

[HanesGeo.com](https://www.HanesGeo.com)

**Location:**  
Manvel, Texas

**Product and Quantity:**  
Armormax®- 5,000 ft<sup>2</sup>

**Installation Date:**  
May 2023

**Application:**  
Shoreline Stabilization

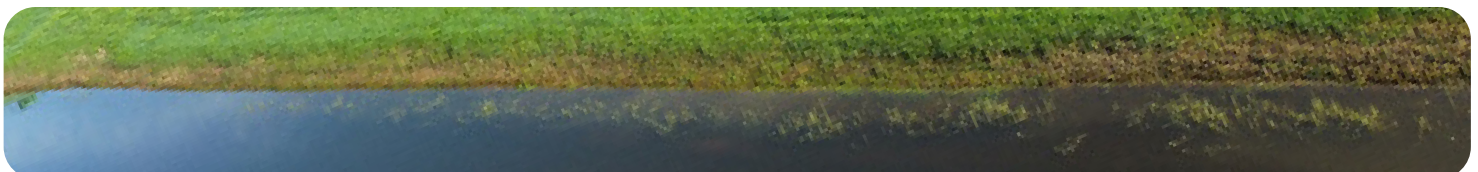
**Owner:**  
Sedona Lakes MUD #1

Engineers for Sedona Lakes MUD #1, Pond 5, faced a reoccurring challenge of sloughing of the edges of an amenity detention pond. Sloughing of the shoreline edge occurs as the pond fills with water after a rain event, the water recedes, leaving the heavy, unprotected, saturated soil at the edge falls into the pond. Wave action against the soil edge accelerates the erosion and deterioration of the pond edge.

This pond shoreline has a 3H:1V slope descending from the top of the slope with a walking trail to the water's edge. As the edge drop off to the water surface became higher, residents could no longer safely walk down to the pond edge. The engineering team working for the MUD was looking for options that provided stability of the pond edge, facilitated vegetation establishment, and met the budget needs of the client.

The Armormax system is a combination of the Propex Pyramat75 high performance turf reinforcement mat along with corrosion resistant engineered earth anchors (EEA). On the Pond 5 Shoreline Stabilization project, the Armormax system also incorporated a burrito stone wrapped section with an EEA to protect the toe of the slope, underwater.

The Armormax system installed easily and quickly established vegetation, naturally blending into the surrounding slopes. The pond shoreline is protected, allowing residents to walk down to the pond edge.



Follow us on

