

HANES GEO COMPONENTS

Grounded in Solutions for Your Growth

LANDSCAPE PRODUCT CATALOG



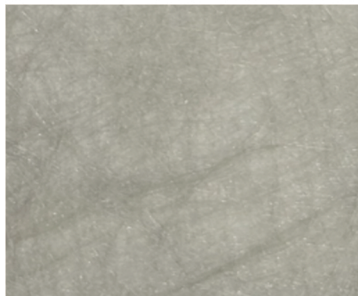
GEOTEXTILES | LANDSCAPE/WEED BARRIERS | FABRIC PINS | GEOGRIDS
GABIONS | POROUS PAVERS | CELLULAR CONFINEMENT | SILT FENCE
GEOCOMPOSITE DRAINBOARD | EROSION CONTROL | STORMWATER MANAGEMENT



Pro Ion
1.5 oz. Pointbond



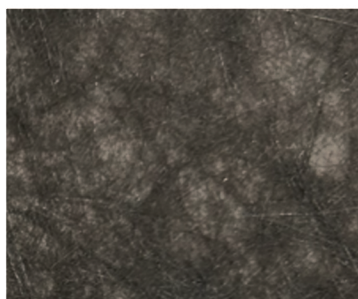
Pro Ion Plus
2.75 oz. Pointbond



Pro Silver
2 oz. Flatbond



Pro Silver Plus
3oz. Flatbond



Pro Steel
2 oz. Flatbond



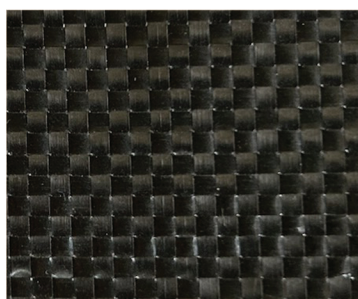
Pro Steel Plus
3 oz. Flatbond



Pro Platinum
4.8 oz. Capped & Woven



Pro Platinum Plus
5 oz. Capped & Woven



Pro Gold
3 oz. Woven Groundcover

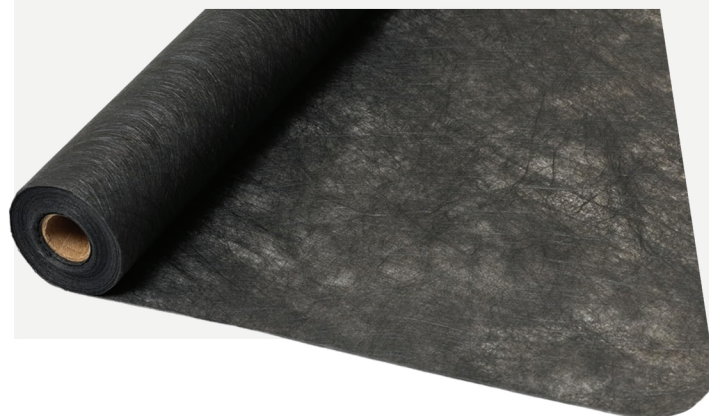
Nonwoven Fabrics

Pro Ion & Pro Ion Plus

Pro Ion and Pro Ion Plus are made of spunbond polypropylene, allowing more air and water to pass through.

Pro Silver/Steel & Pro Silver/Steel Plus

Constructed to provide outstanding water and air permeability, these products serve as excellent weed barriers and filter fabrics.



Woven Fabrics

Pro Platinum & Pro Platinum Plus

These black, needled, woven fabrics offer excellent tear strength with an added degree of UV-resistance.

Pro Gold

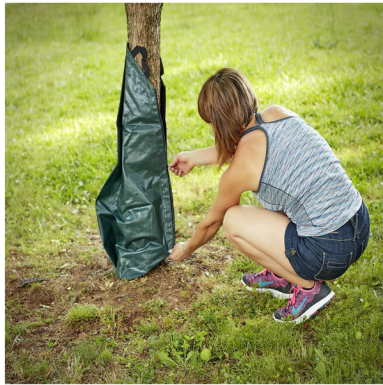
Pro Gold is a woven polypropylene with additional UV stabilizers that last for years in direct sunlight.

Frost Blankets

These fabrics protect plants from frost and wind by trapping heat and moisture to insulate plants while accelerating germination. The center-folded rolls are easy to handle and can be used to cover large areas or cut to size.



Frost Blanket

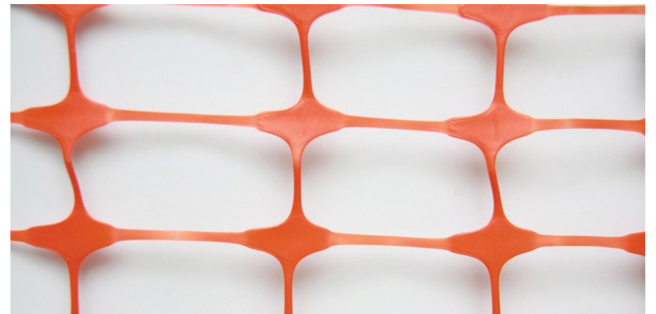


Tree Watering Bags

Our tree watering bags help hydrate new and young trees by distributing approximately 20 gallons of water to the tree base over a period of 4-6 hours. This allows for the gradual absorption of water, preventing unnecessary runoff.

Landscape Fabric Pins & Sod Staples

Landscape fabric pins and sod staples can be used to secure fabrics, netting, frost blankets, edging, erosion control blankets, seed germination mats, hoses and more.



Barrier Fence

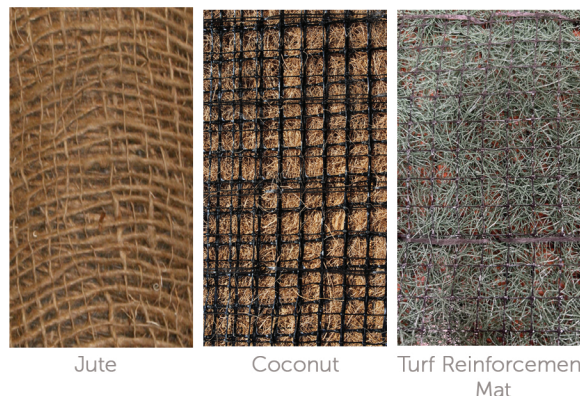
Barrier fence is used to limit pedestrian access to restricted areas. Our fence is available in multiple weights and colors and can be installed using T-posts or wooden stakes.



EROSION CONTROL | Reduce Soil and Vegetation Loss

Erosion control/seed germination blankets are designed to reduce seed and soil loss while helping establish vegetation. Hanes Geo Components' blankets range from lightweight straw to heavier-duty coconut blankets. All our blankets are available in a variety of sizes with photo-degradable thread.

Temporary	Jute Matting Straw Blankets Excelsior Blankets
Extended Life	Coconut Blankets Coconut/Straw Blankets Coir Matting
Permanent	Standard Turf Reinforcement Mats High-Performance Turf Reinforcement Mats



Straw Wattles and Coir Logs

Straw wattles and coir logs are part of our tubular sediment control product line. Made of weed-free materials, they are available in a variety of diameters and lengths. Applications include slope stabilization, perimeter control, inlet protection, and more.



Silt Fence

Hanes Geo Components' silt fences are customized to meet any job or DOT requirements. Preassembled fences are available as well as fences customized to include your name, phone number, or logo.





GEOTEXTILES | Engineered To Save Money

TerraTex® Wovens

Made of polypropylene filaments formed into a stable network, TerraTex® Woven Geotextiles retain their position while providing the separation, reinforcement, and filtration necessary for many applications.

TerraTex® Nonwovens

With a random, three-dimensional pore structure, TerraTex® Nonwoven Geotextiles are highly water permeable and provide the separation, reinforcement, and filtration necessary for many applications.

TerraTex® GS	Separation & Stabilization Grab Tensile Strength of 200lbs.
TerraTex® HD	Meets AASHTO M288 stabilization specifications. Grab tensile Strength of 315lbs.
TerraTex® SF-D	High-strength silt fence fabric. Meets FHWA, AASHTO, and many other DOT specifications.

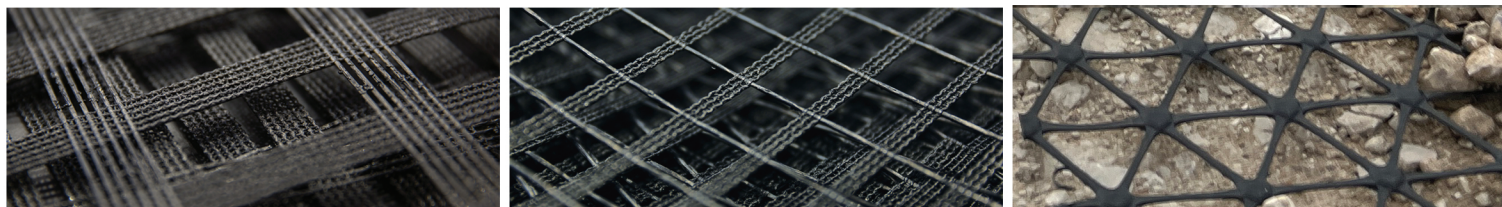
TerraTex® N03/ N04	Lightweight fabrics for commercial drainage protection.
TerraTex® SD & N04.5	Extra-strength fabrics for high water permeability and puncture resistance.
TerraTex® N06 N07/N08	Heavyweight fabrics for embankment protection, erosion control, ground stabilization, geomembrane underliner, railroad bed stabilization, heavy-duty drainage protection, and separation.



TerraTex® Nonwoven is commonly used as a liner in French drain trenches.

Uniaxial & Biaxial Grids

Uniaxial geogrids provide maximum strength in a single direction making them ideal for load-bearing structures like retaining walls. Biaxial geogrids offer high tensile strength in both longitudinal and transverse directions.



TerraCell® Cellular Confinement System

TerraCell® is a three-dimensional cellular system made of high-density polyethylene strips. It provides confinement and reinforcement for soil, gravel, sand, mulch, lava rock and more.



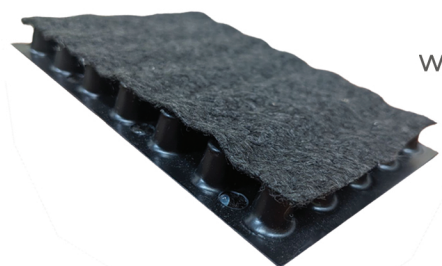
DRAINAGE SOLUTIONS | Preserving Your Landscape

Reduce impervious areas of your landscape, reduce surface runoff and minimize the risk of flooding and erosion with these drainage solutions.



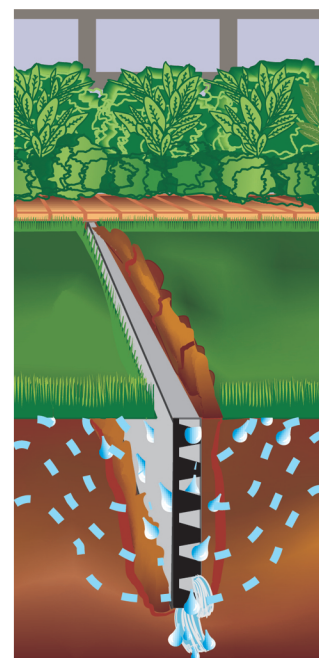
Porous Pavers

These interlocking pavers can be filled with stone, gravel, or sand to create stable load-bearing areas that still allow water to pass through naturally. Eliminate standing water puddle on your drive or walkways with porous pavers.



TerraDrain® Strip Drains

TerraDrain® strip drains are constructed by fully wrapping a perforated, high flow capacity polymeric core with a nonwoven filter fabric. The filter fabric is bonded to the core and prevents soil intrusion into the flow channels while allowing water to enter the drain core from all sides.

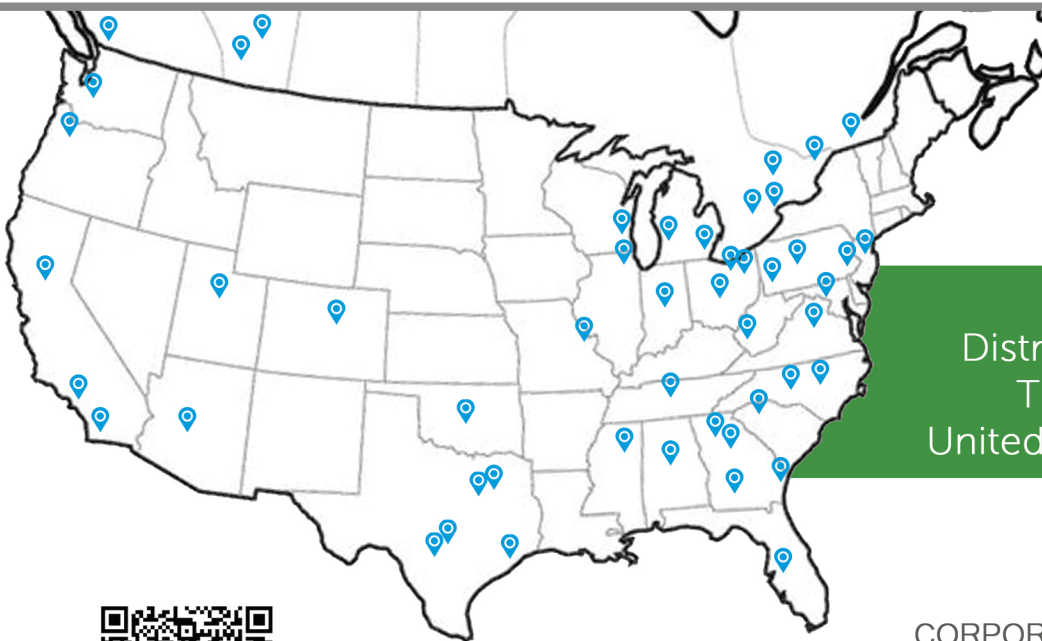


Call us today at (336) 747-1600 to get more information about
our wide variety of erosion and landscape products



Hanes Geo Components (HGC) is one of the leading suppliers of construction, landscape, erosion control, and turf products. Backed by Leggett & Platt, HGC enjoys the resources and support of a global manufacturer, including comprehensive product knowledge, supply, and a rapidly expanding network of distribution facilities across North America.

With an experienced sales staff and a strong customer base, we've been able to create a solid platform for growth in emerging new markets. Our success depends on how well we work with our customers, so we're committed to providing the best possible products, customer service, and price.



We Have
Distribution Locations
Throughout the
United States and Canada



Visit Our Website

CORPORATE HEADQUARTERS



WINSTON-SALEM, NC
815 Buxton Street
Winston Salem, NC 27101



hanesgeo.com